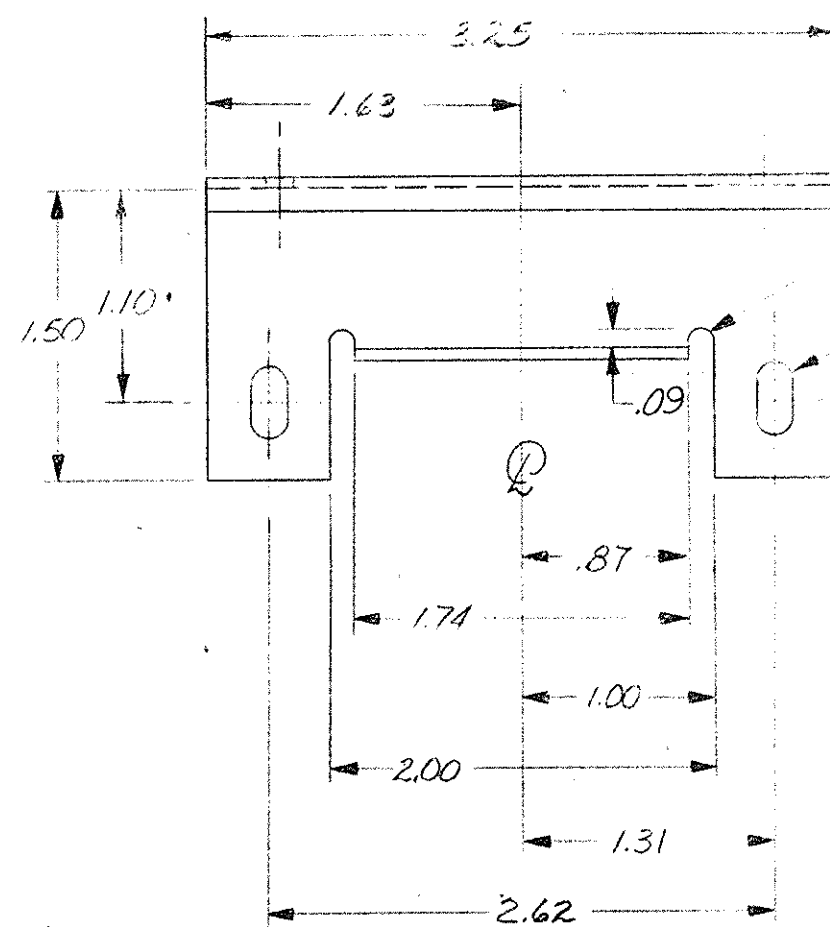
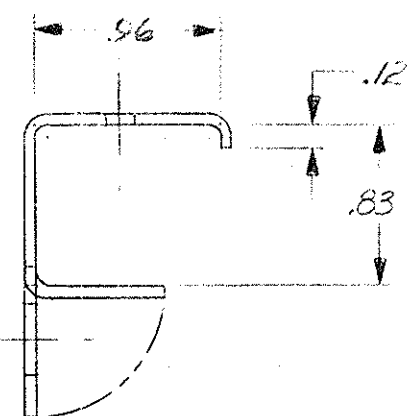
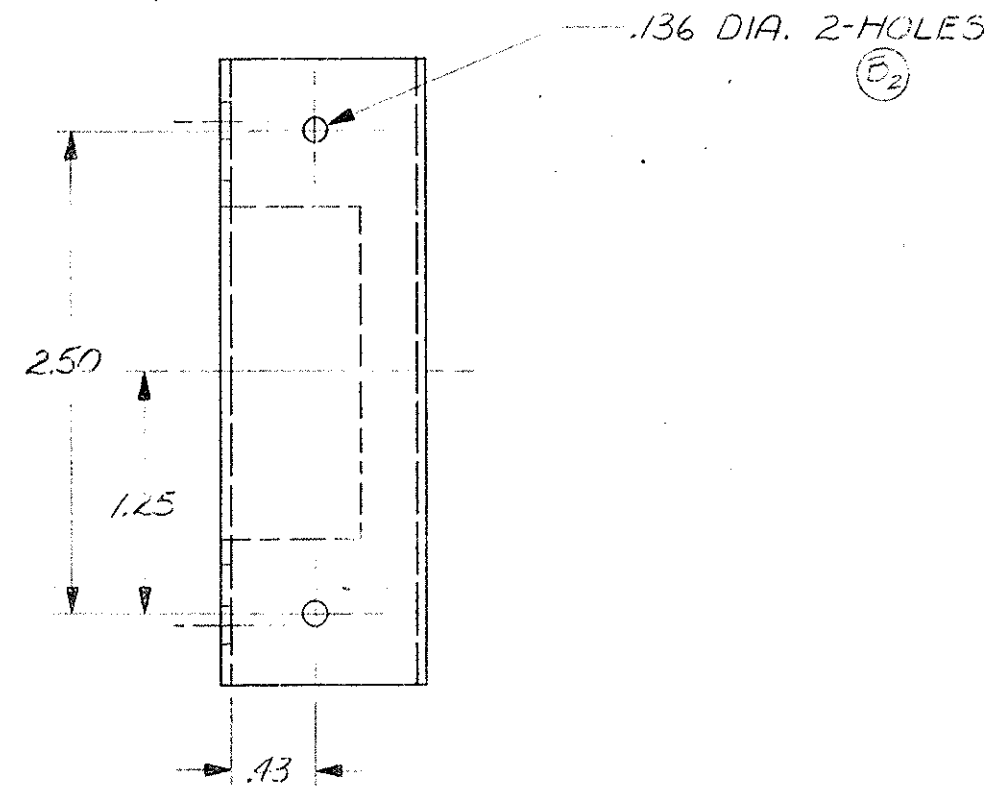


19261



R. .203 x .375
2-SLOTS
E1

NOTES:
UNLESS OTHERWISE SPECIFIED—
ALL INSIDE RADIUS MATERIAL THICKNESS.
FINISH—PAINT FLAT BLACK ESE-M2P30-A OR EQUIV.
SAMPLE TO BE APPROVED BY ENGINEERING
DEPT. PRIOR TO PRODUCTION.

19261

B ₂	2-SLOTS WAS 2-.203 DIA. HOLES # WAS 2-DIERCED HOLES	3-6 68	FP	PZ	Y
A	2.62 WAS 3.62	2-5 68	E	FP	Y
—	REL. FOR PRODUCTION	1-31 68	E	FP	Y
E.C. NO.	CHG. LET.	REVISIONS			DATE BY CK.
CUSTOMER MODEL NO.		IONIA MODEL NO. 1965 COUGAR			
SUPERSEDES		SUPERSEDED BY			
REF.		NEXT ASSY.			
EXP. NO.		LAYOUT NO.			
SMITH PLASTICS DIVISION		A.O. Smith Corporation			
IONIA, MICHIGAN		PRODUCT ENGINEERING			
TITLE SUPPORT—CONSOLE BODY UPPER AT HINGE					
MATERIAL .0598 STEEL SAE #106B OR #1010					
DRAWN T. ZANDER	DATE 1-10-68	SCALE FULL	PART NUMBER 19261		
CHECKED [Signature]	APPROVED [Signature]	ENGINEER [Signature]			