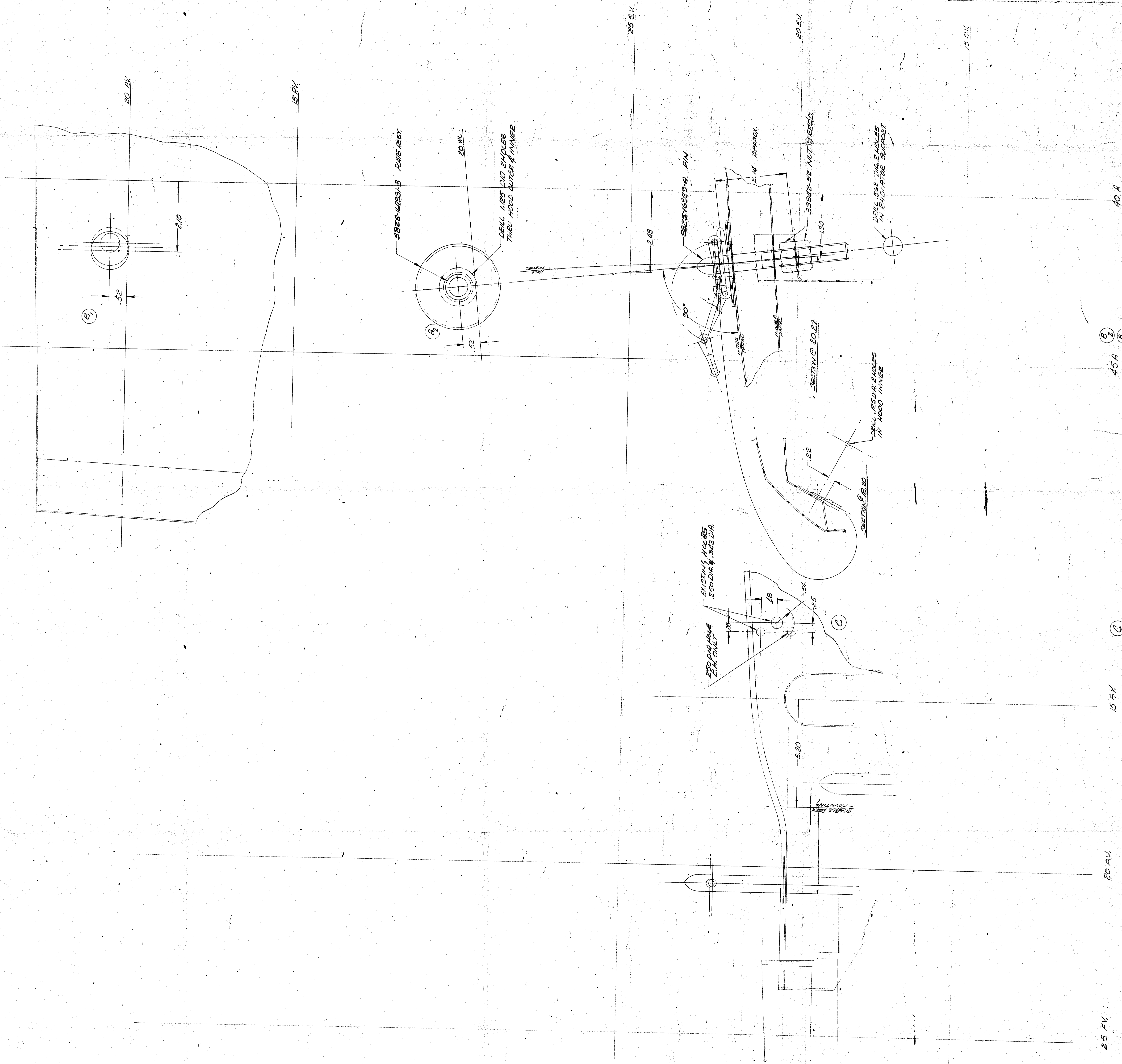


D	TITLE REVISED	DATE	BY
C	1.250 DIA HOLES ADDED	11/11/52	WJ
B	1.52 NOS. 27	11/11/52	WJ
A	1.25 DIA HOLES IN HOOD	11/11/52	WJ
REVISIONS		DATE	BY
REVISED FOR PRODUCTION		11/11/52	WJ
DESIGNED BY		DATE	BY
SUPERSEDES		DATE	BY
LAYOUT NO.		NEXT VIEW	
A.O. Smith Corporation LANSING, MICHIGAN PRODUCT ENGINEERING			
TITLE		PART NUMBER	
PIN & HOEN MOUNTING HOLES		54-284-15-16-1-2-3-4	
MATERIAL		QUANTITY	
303 STAINLESS STEEL		1	



15 FK

25 FK

20 FK

15 FK

(C)

45 A

(B)

(A)

40 A